

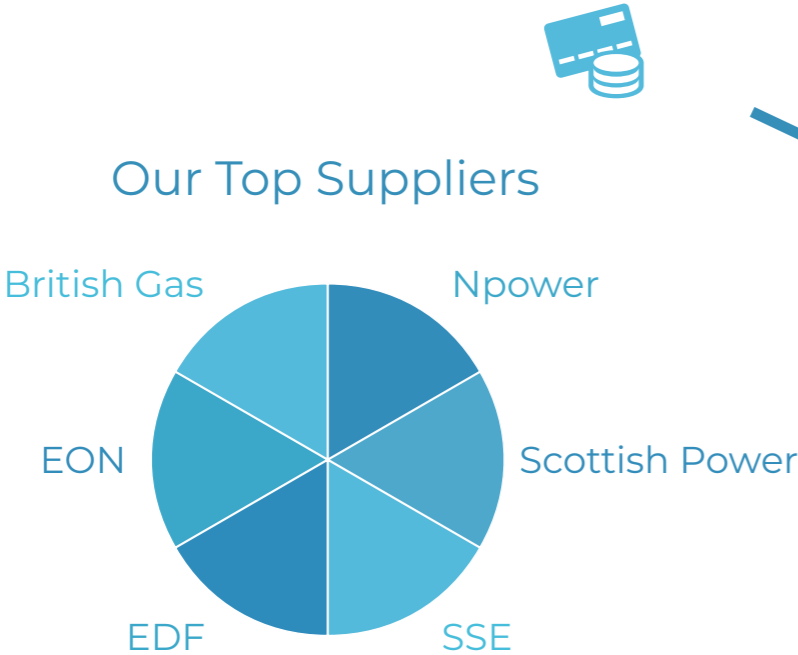
Energy Savers Guide



# How to be energy efficient, save money and regain control of your business energy

To keep businesses running efficiently, it is important that energy outgoings are analysed to see where savings can be made, but where do you start? Here are our top tips to become more energy efficient in a few simple steps.

Energy can be a substantial outgoing for businesses and with the cost of both gas and electricity on the rise, it is important now more than ever to thoroughly investigate how to reduce energy expenditure.



## Switch Supplier

The best first step to make when looking for savings is to check you are already on a good deal, if you have been on the same contract that has been on renewal, then you could be missing out on an improved market price for what your using.

Using us as your broker we will ensure you with a competitive deal and some great services.

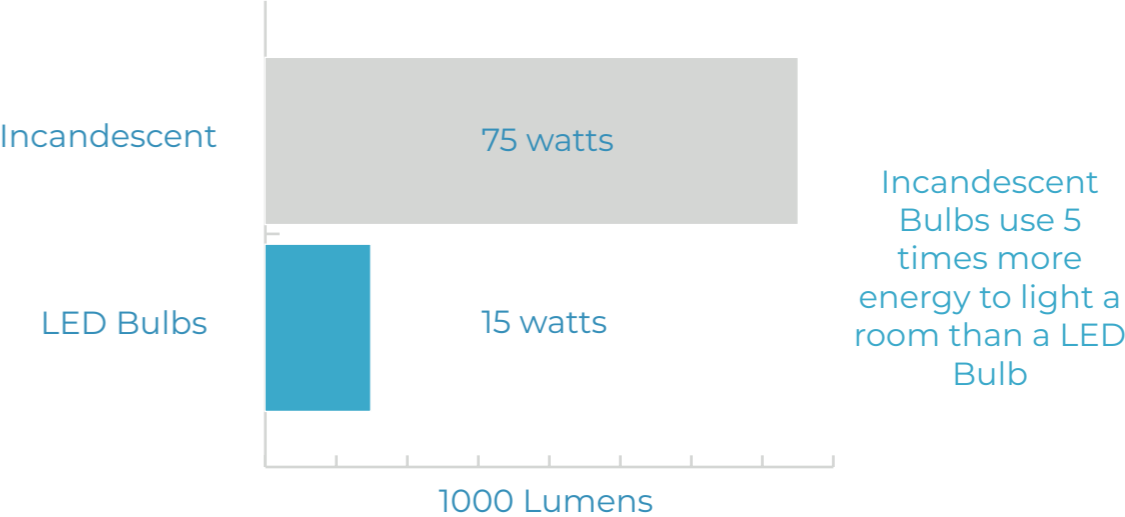
## Don't know where to start?

Firstly, the best way to start saving energy is by finding out where most of your electricity is being consumed.

Many energy suppliers provide smart energy monitors for free, If not, there are many at extremely competitive prices online. This can then be used as a reference point once your energy efficiency scheme has commenced.

Once you have gained information on your current energy consumption, you can start implementing ways to reduce your energy.

Set an achievable goal and share it with your staff. By getting them involved with the process you can work together as a team to reach targets, also, they may provide you with valuable ideas of how his can be reached.



## 9 Key ways to save on your energy bill

### Heating



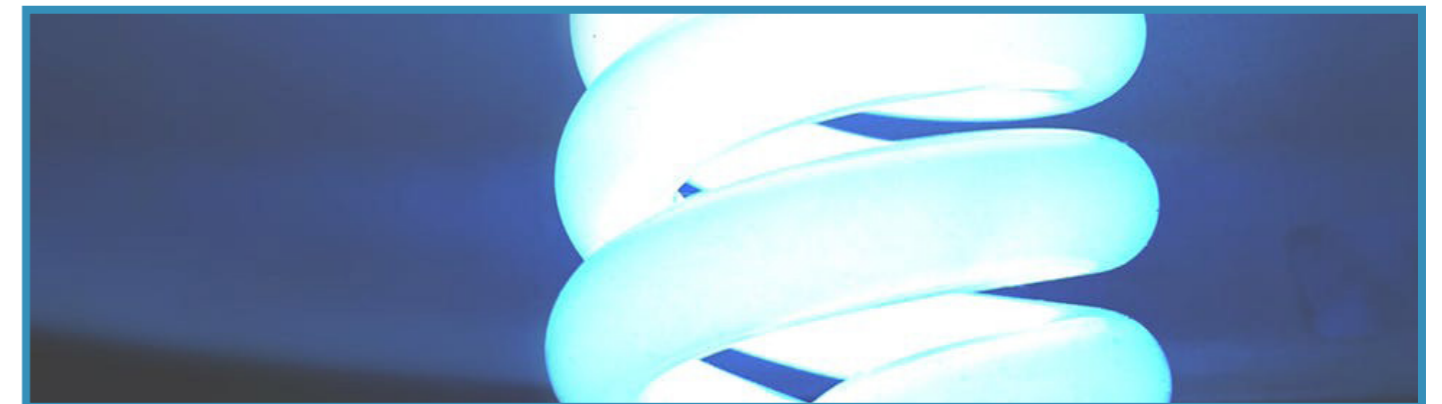
It is likely that in heating will make a larger impact on your energy bills over the winter months. However there are methods you can apply to help reduce this usage. Thermostat systems can allow heating and air conditioning to be activated at certain times, minimal usage leads to minimalized costs. Assessing the colder parts of your building and checking for draughts can prevent pointless heating in spaces where it is being instantly lost. Very simple solutions that can make the difference to energy consumption.



### Lighting



Making changes to your lighting arrangements will benefit your bulbs and your bills. There is equal importance to turning the lights off as it is to turn the heating off, it calls back to the message "minimal use minimal cost". An easy and effective method to do this is to have motion sensor lighting installed, this negates the use of switches and guarantees reduced usage. This system is best used with LED bulbs since the action of being turned on and off does not affect its operating life.



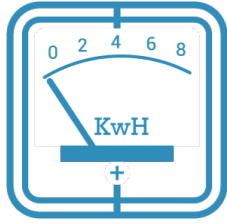
### Draught



As well as losing heat to windows and doors it can still be lost through poor insulation. Having the frames properly fitted and secured can save you money by reducing draughts, along with effective insulation which will help to retain the heat that you are generating.



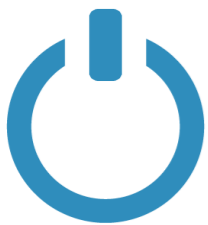
## Heating during winter



Savings can not only be made by turning off your heating when out of the workplace, simply lowering the thermostat can generate savings. This is unlikely to impact your bill significantly, however over a year you should start to see a slight decrease in your consumption. Some reports show that by turning the heating down by one degree could save a standard home upwards of £85 pounds over the year, apply these methods to your business and reap the rewards.



## Computer and Office Equipment



There are many different ways to save energy in the office and other building facilities with equipment being a good place to start. The office equipment should be turned off when not in use. Regular maintenance and replacing older peripherals will also add to reducing the energy costs of your building. This applies to radiators, fans and other amenities used for heating and air conditioning, ditch the old energy consuming electricals and treat yourself to newer energy efficient models.



## Engage your staff in energy efficiency



Employee engagement and education in energy efficiency can change behaviour in both the workplace and at home. By using simple eye-catching techniques, such as posters and flyers, you can have your colleagues turning lights off and closing doors in no time. As a time saving alternative you can find these materials, ready to print, across many places online. Making these changes yourself will be small steps in lowering energy bills, every employee needs to be committed for your efforts not to go to waste.



## Energy Champion



Having an energy champion among your employees is another great way to implement and maintain these methods. They will ensure that these standards are met to receive maximum savings. Whether it be subtle polite reminders to fellow colleagues or simply leading by example, they will be your leader in goal to earn savings. We suggest that your chosen employee for this position is someone with great people skills, are energy savvy and already making efforts to reduce costs across the business.



## Tea & Coffee



We very frequently over fill the kettle, sometimes it's to make sure we'll have enough for a cup of tea or coffee but most of the time it's just a bad habit. This leads to using more energy to heat more water which equals spending more money. Most kettles come with a guide to follow showing where to fill up to, using this will stop unnecessary amounts of water being boiled. Furthermore, looking into installation of a boiling water tap can save more money in the long run.



## Energy Saving Light bulbs



One of the simplest ways to save energy is changing the type of bulbs you are using. Many companies have taken on the extremely popular LED lighting which can seriously cut down electricity prices, however some have an issue with the colour it emits claiming it is too harsh on the eyes for working environments. Since this feedback has come out a lot of LED manufacturers have produced a range of colour temperatures for their bulbs, three colours that range from a warm white, bright white then and a daylight colour.





0800 007 4001  
[www.utilitybidder.co.uk](http://www.utilitybidder.co.uk)  
[info@utilitybidder.co.uk](mailto:info@utilitybidder.co.uk)

